

Poster number: P1.37

Influenza vaccine effectiveness to prevent admissions with influenza in adults belonging to target groups for vaccination in the Valencia Hospital Network for the Study of Influenza (VAHNSI). A test-negative study, 2013-2014 influenza season

Puig-Barberà, Joan^{1,2*}; Carballid-Fernández, Mari³; Limón-Ramírez, Ramón⁴; Trujada-Girbés, Miguel⁵; Oter-Reigada, María Carmen⁶; Milar-Maseres, Joan⁶; Carratalá-Munuera, Cóncha⁷; Gil-Guillén, Vicente⁷; Natividad-Sanch, Angels¹; Trmés, Anita¹; Buigues-Vila, Ampar¹; Mira-Iglesias, Ainara¹; López-Labrad, Francisc Xavier^{1,8}; J Díez-Domingo¹, on behalf of Valencia Hospital Network for the study of Influenza and respiratory virus diseases (VAHNSI), member of the Global Influenza Hospital-based Surveillance Network (GIHSN)

1: Fundación para el Fomento de la Investigación Biomédica y Sanitaria (FISABIO), Valencia, Spain; 2: Centro de Salud Pública de Castellón, Castellón, Spain; 3: Hospital General, Castellón, Spain; 4: Hospital La Plana, Vila-real, Spain; 5: Hospital Doctor Peset, Valencia, Spain; 6: Hospital de la Fe, Valencia, Spain; 7: Universidad Miguel Hernández, San Juan de Alicante, Spain; 8: CIBERESP, Instituto de Salud Carlos III, Madrid, Spain.

Objectives

Primary

Measure influenza vaccine effectiveness (IVE) in preventing laboratory confirmed influenza hospitalizations in adults 18 years old or older targeted for influenza.

Secondary

To estimate IVE by age groups.
To estimate IVE by circulating strain.

Results

Eligible screened: 2,911 admissions

Consent: 2,739 (94%)

Excluded: 1,531 (55%)

- Institutionalized: 13
- No resident (< 6 months): 33
- Previous admission within 30 days current episode: 20
- No ILI symptoms within 8 days to admission: 1,287
- Egg allergy: 1
- Previous (same season) laboratory confirmed Influenza: 2
- Not belonging to vaccination target groups: 153

Included: 1,231 (45%)

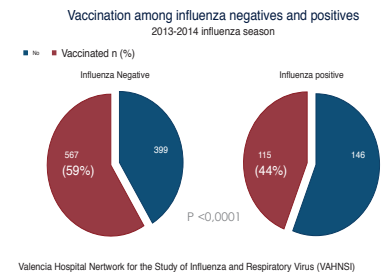
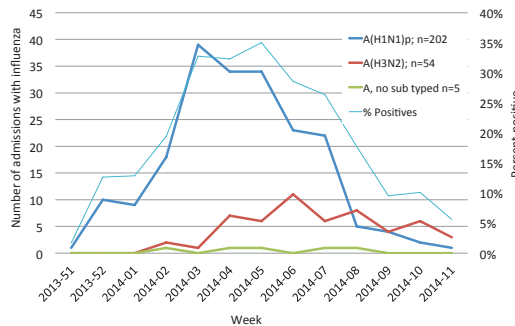
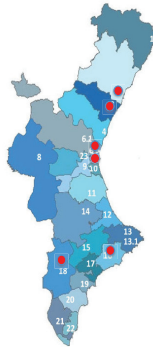
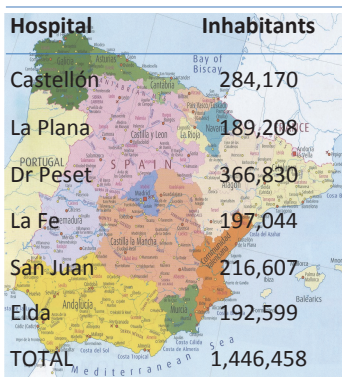
Included with valid results:

1,227 (4 (0.3%) inadequate sample)

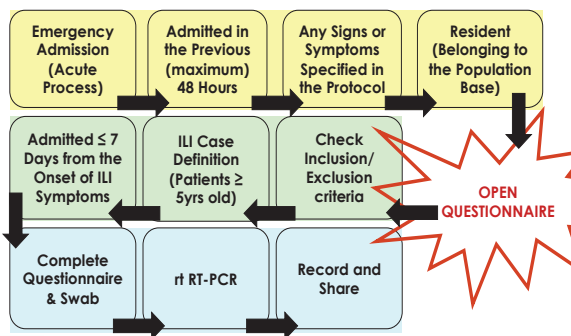
Positives: 261 (21%)

Negatives: 966 (79%)

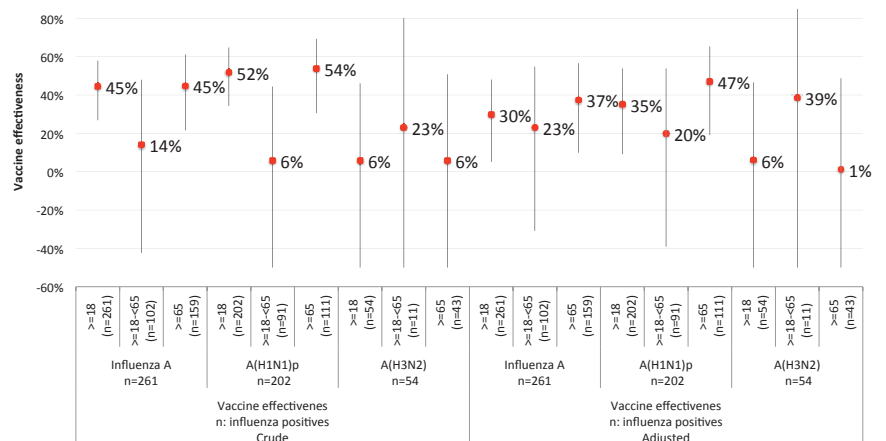
Scope and population



Methods



Influenza vaccine effectiveness in preventing admissions with influenza, overall and by subgroups



Influenza vaccination was effective among vaccinated in preventing 30% to 50% admissions with influenza

Contact: J Puig-Barberà. E-mail: puig_joa@gva.es

Acknowledgment/ Support: This network activity is partly funded by Sanofi Pasteur.